



# Contract Engineering Services cc

## Winch Manufacturers

This particular range of winches has been designed with simplicity and safety in mind. This winch is ideally suited to the toughest of commercial or industrial applications.

With automatic fail-safe braking done via a heavy duty worm and spur gear configuration, there are no requirements for complicated braking arrangements such as ratchets or friction disc braking systems, both of which require frequent maintenance.

## HAND WINCHES

**CES 750KG TO CES13000KG MODELS**



## INFORMATION

OEM manufactured CES Safety Hand Winches are in-house designed and manufactured. The CES Safety Hand Winch components are manufactured in-house on CNC precision machinery. General purpose, these winches have a built-in safe braking device. These winches range from 0.4 ton to 20-ton capacity with drive options of hand wheel, hydraulic or electric motor.

### FEATURES

- In- house designed
- Highest quality materials, bearings and gears used for durability
- Built in mechanical friction brake
- Load tested

### USE

- This particular range of winches has been designed with simplicity and safety in mind. This winch is ideally suited to the toughest of commercial or industrial applications.

### NOTE

- Safe Working Load Calculated on full Drum
- Wire Rope winded on Winch in-house

# CES750

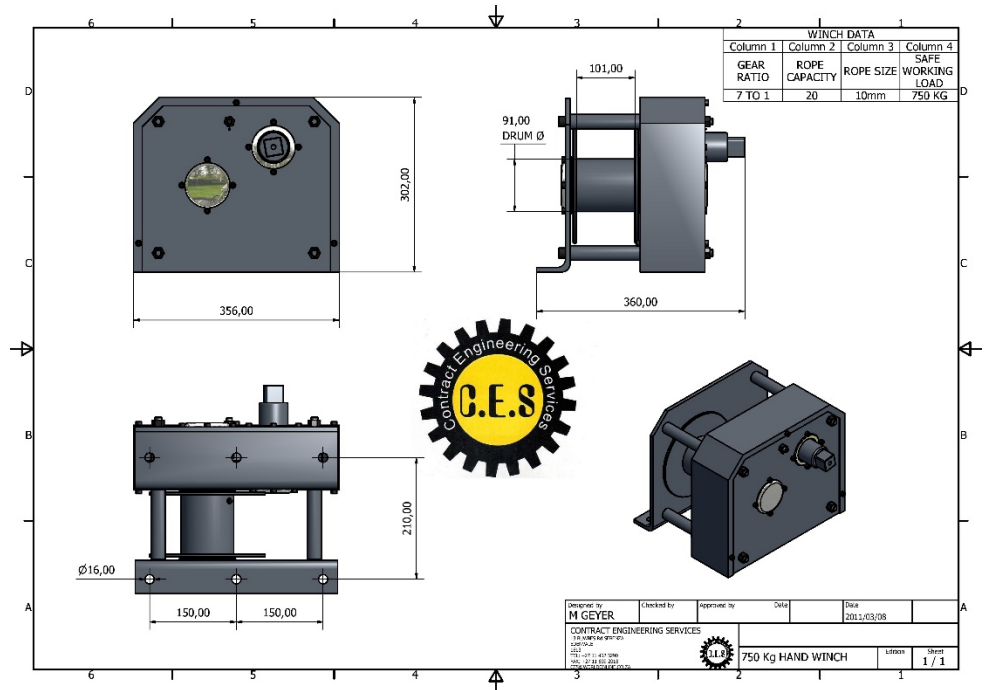
## Product range:

### Capstan Winches:

Mining, Marine, Railways, and Industrial applications with variable capacities and pulling speeds.

### Purpose Built Winches:

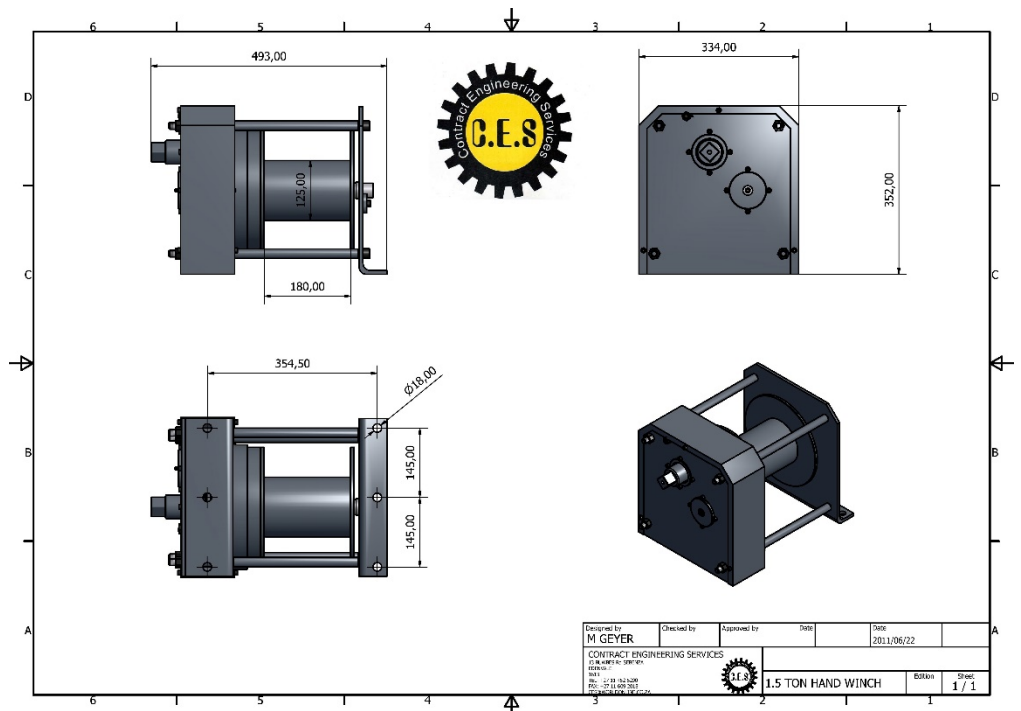
Specific designed winches for specialized applications c/w extra's like: (grooved drums, large capacity drums, double drums, fail-safe hydraulic and electrical brakes etc)



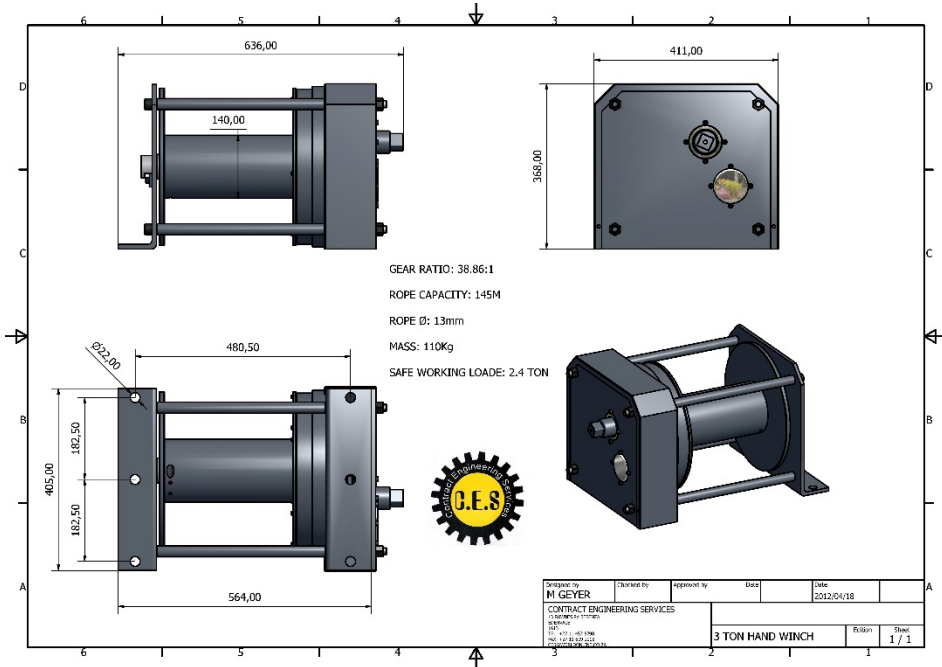
# CES1500

### Epicycle gear take-up winches:

Specifically designed for automatic tentioning on overland conveyors. Our gear design is a combination of worm and epicycle gears. The failsafe brake provides the benefit of runaway in an event of brake failure and easy maintenance. Our design also accommodates various winch speeds and ratios to suit customer specifications.akes etc)



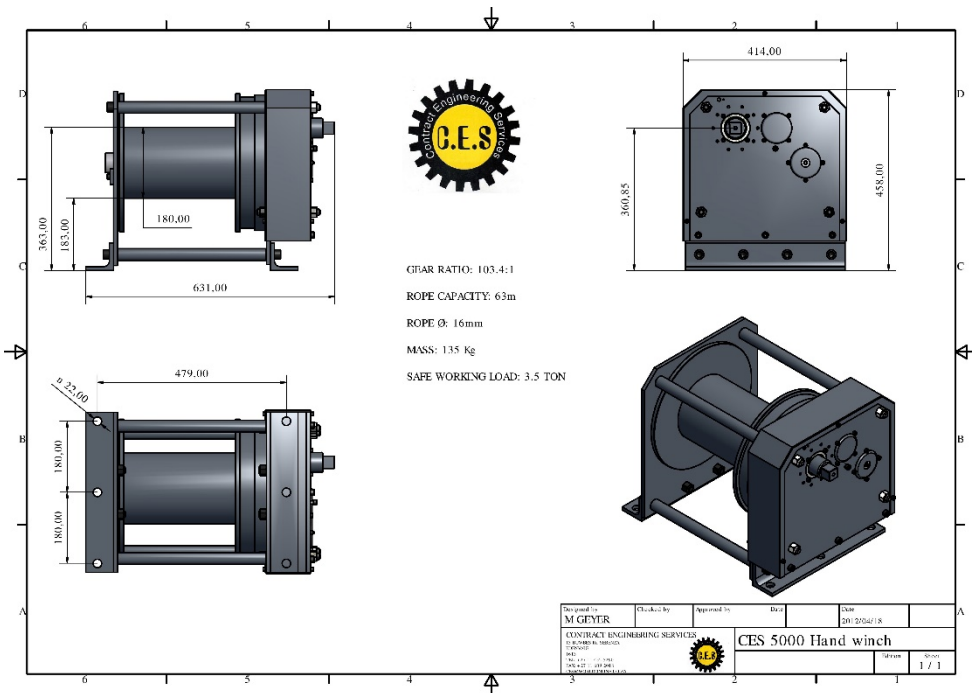
# CES3000



## Safety Hand Winches and Motorized Safety Hand Winches:

General purpose. These winches have a built-in safe braking device. These winches range from 0.4 ton to 20 ton capacity with drive options of hand wheel, hydraulic or electric motor.

# CES5000



## Scraper Winches:

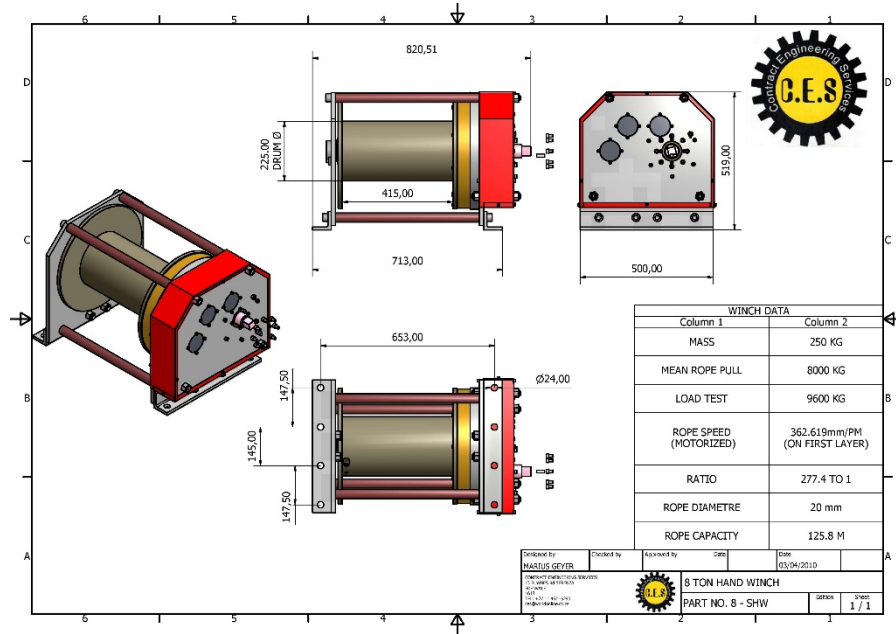
Design and manufacture of 37Kw, 55Kw and 75Kw double drum Scraper winches and accessories.

## Accessories:

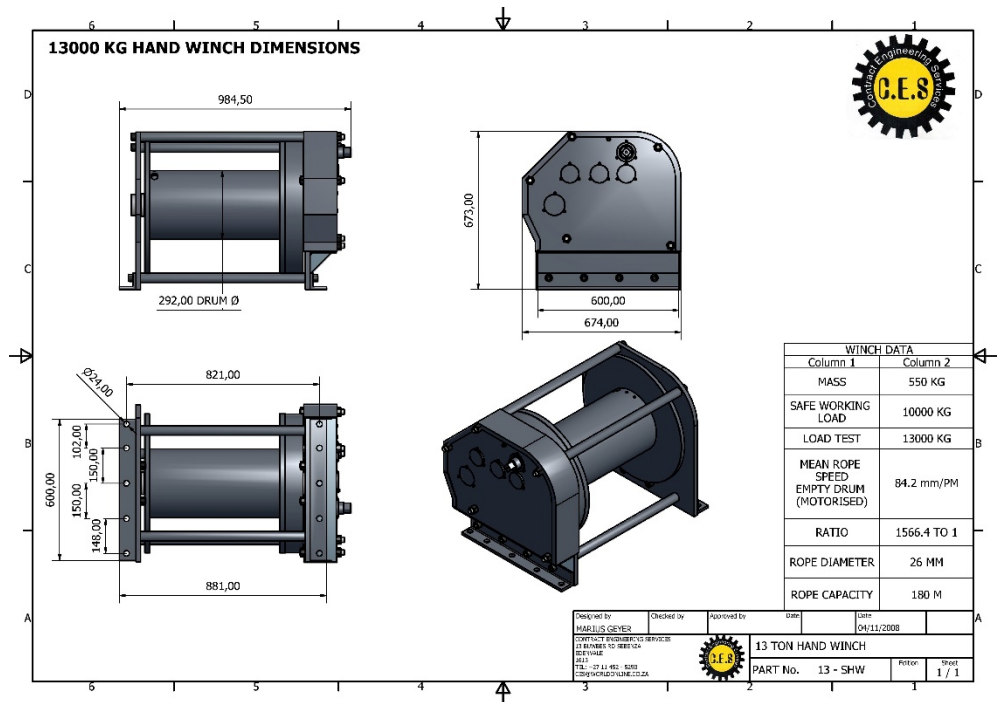
Standard Forward and Reverse Control Panels c/w Lockout and Emergency Stop. Control Panels with Variable Speed Adjusters. (Soft Start and Line Speed settings) Fully Automated Control Panels with Plc and Variable Speed Drive. Load Cells and load cell readouts Wire rope and accessories can also be supplied to customer specifications. Enclosures in Flame and Dustproof.

Reasons why you must consider a CES Winch: The design is done with the most powerful software to define all elements of manufacturing. Various specifications like: DIN, ISO etc is incorporated in the design. Our workshop equipment is CNC controlled lathes and boring mill equipment which delivers close tolerance specifications during manufacturing. Material sizing of the frame and components were determined by using FEA tests. Solid and more tie rods are used in the design to avoid deflection of the side plates and gearbox under load. We have hereby increased the parallelism of gear faces to each other creating a low torque turning momentum. Smaller electric motor requirement for a winch selection. (Torque requirement) A mechanical ratchet brake device controls the load during raising or lowering. This unit eliminates flying handles or runaway loads in manual winches. No welding is required on the frame. The only welding required is on the manufacturing of the drum. All winches are tested and a Load Test Certificate will be issued prior to delivery. CES design has a unique bolt-on method, changing from a hand wheel to an electrical drive unit in minutes. Alloy steel is use for the manufacturing of gears and shafts. The shaft and pinion runs on sealed bearings, close to no maintenance - no grease! CES can repair any Winches. Should a customer select a CES winch/es combined with our Fully Automated Control Panels with Plc the combination, it is more economical because of our smaller electric motor selection. CES research and development continues with our customer's specifications and requirements to improve our product and efficiency. CES strives towards an ex stock product availability.

## CES8000



## CES13000



## Accessories:

Standard Forward and Reverse Control Panels c/w Lockout and Emergency Stop. Control Panels with Variable Speed Adjusters. (Soft Start and Line Speed settings) Fully Automated Control Panels with Plc and Variable Speed Drive.

Load Cells and load cell readouts

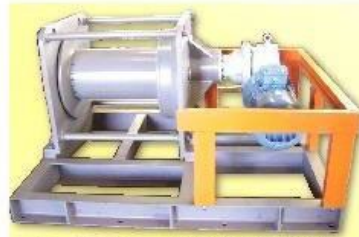
Wire rope and accessories can also be supplied to customer specifications. Enclosures in Flame and Dustproof.



# CONTROL PANEL

SECTION  
160 WINCHES

SECTION  
160



8 Ton H3 5500 Conveyor Take - Up Winch with 11KW Motor.



3 to 15 Ton Motorized Safety Hand Winches with Control Panels.



2 Ton to 15 Ton High Torque Take - Up Winches with Epicyclic Gear. Manual or fully Automated PLC Controller for belt tensioning.



15 Ton Hand Winch



Vertical Sheave Wheels



Horizontal Sheave Wheels



Rope capacity: 6mm to 42mm

**Product List**  
Safety Hand Winches 3 Ton To 15 Ton  
Safety Motorized Hand Winches 3 Ton To 15 Ton  
2 - 20 Ton Take - Up Winches  
Hydraulic Winches  
Manual Forward And Reverse Control Panels  
Control Panels With Variable Speed  
(For Soft Start And Line Speed Setting)  
Fully Automated Control Panels With Plc And Variable  
Speed Drive.  
Horizontal And Vertical Sheaves  
Load Cells  
Load Cell Read Outs ( Panel Mounted Or Free Standing)  
Repairs On All Winches  
Winch Testing And Supply Of Test Certificate

2 Ton to 15 Ton High Speed Conveyor Take - Up Winches with PLC Controller for fully Automated Conveyor Belt Tensioning. Line Speeds 5 meters per min to 11 meters per min



**CES Contract Engineering Services**  
Reg. No 2009023372  
13 Simba Road, Sebenza, Edenvale  
PO Box 9156, Edenvale, 1613, South Africa  
Tel: +27 (0)11 452-5290  
Fax: +27 (0)11 609-2018  
email: ces@worldtrine.co.za  
web site: www.ces.co.za

PAGE  
XX

## CONTACT DETAILS

Sales  
Mike De Vries  
Tel: 011 452-5290  
Fax: 011 609-2018  
Cell: 082 558 7992  
Email: [mike@ceswinches.co.za](mailto:mike@ceswinches.co.za)

## Address

7 Simba Road  
Sebenza  
  
Edenvale  
1609  
email: [ces2001@telkomsa.net](mailto:ces2001@telkomsa.net)